

# Immunohistochemical assessment of tumor suppressor gene *Wwox* in relation to proliferative marker *Ki67* proteins expression in giant cell lesions of the jaws and giant cell tumor of long bones

Muna Salih Merza, B.D.S., M.Sc., Ph.D. <sup>(1)</sup>

## ABSTRACT

**Background:** Peripheral giant cell lesion (PGCL) and central giant cell lesion (CGCL) of the jaws have a distinct clinical behavior. Giant cell tumour (GCT) is a benign locally aggressive neoplasm affects the long bones. Both lesions are characterized histologically by multinucleated giant cells in a background of ovoid to spindle-shaped mesenchymal cells. The WW domain-containing oxidoreductase (*WWOX*) gene is located at 16q23.1-16q23.2, a region that spans the second most common human fragile site, *FRA16D*, at 16q23.2. The Ki-67 antigen is a nuclear protein that is associated with and may be necessary for cellular proliferation. Ki-67 protein is present during all active phases of the cell cycle (G<sub>1</sub>, S, G<sub>2</sub>, and mitosis), but is absent from resting cells (G<sub>0</sub>). This study aimed to evaluate and compare immunohistochemical expression of tumor suppressor gene (*WWOX*) and proliferative marker (*ki67*) in giant cell lesions (GCLs) of the jaws and long bones.

**Materials and methods:** Forty five retrospective paraffin embedded tissue blocks of giant cell lesions of the jaw and long bones were included in this study. Sections were stained immunohistochemically with anti *WWOX* and anti *ki67* monoclonal antibodies.

**Results:** Positive *WWOX* expression was found in 12 cases (80%), 14 cases (93.3%) and 12 (80%) of CGCG, PGCG and GCT studied cases respectively, with the highest strong positive expression observed in PGCG. Positive *Ki67* expression was found in 12 cases (80%), 13 cases (86.7%) and 10 (66.7%) of CGCG, PGCG and GCT studied cases respectively with the high proliferative expression score has been recorded in PGCG. Statistically highly significant difference was found in the *Ki67* expression among different giant lesion types ( $p=0.006$ ), while non-significant difference was found in *WWOX* expression. Non-significant correlation was found between expression of *WWOX* and *Ki67* in CGCG, PGCG and GCT studied cases.

**Conclusions:** Similar immunohistochemical expression of *WWOX* and *Ki67* in giant cell lesions of the jaw and GCT of long bones with non-significant correlation between them in different studied lesions suggests that those lesions may be the same disease but with different clinical behavior.

**Keywords:** *Wwox*, *Ki67*. (J Bagh Coll Dentistry 2015; 27(1):121-127).

## INTRODUCTION

Central giant cell lesion (CGCL) and peripheral giant cell lesion (PGCL) are pathological conditions of the jaws that share the same microscopic features, but differ clinically in terms of their behavior <sup>(1)</sup>. They are of unknown origin located more frequently in the mandible than maxilla, occurring in the 2nd and 3rd decades of life. Females are more frequently affected than males <sup>(2,3)</sup>. Peripheral giant cell lesion (PGCL) is considered as a reactive process associated with a local irritating factor that shows low recurrence after treatment, especially if the irritating factor is eliminated. On the other hand, central giant cell lesion (CGCL) presents a variable clinical behavior ranging from slow and asymptomatic growth without recurrence to rapid, painful and recurrent growth <sup>(4)</sup>. The GCT of long bones is a rare benign neoplasm, characterized by local aggressiveness, high recurrence rates and metastasis to the lung <sup>(5)</sup>. It apparently arises from the mesenchymal cells of the connective tissue frame work.

These cells differentiate into fibroblast-like stromal components and multinucleated cells of osteoclastic type <sup>(6-9)</sup>. The principal characteristic of this tumor is the unpredictable biological behavior <sup>(8)</sup>.

The *WWOX* gene (WW-domain containing oxidoreductase) is a candidate tumor suppressor gene located at 16q23.3-24.1, spanning the second most common fragile site, *FRA16D* <sup>(10)</sup>. The *WWOX* protein contains two N-terminal WW domains and a central short chain oxidoreductase-like domain <sup>(11)</sup>, that mediate protein-protein interactions. WW domains mediate complexes associated with signaling pathways implicated in a variety of cellular processes such as transcriptional regulation and protein stability <sup>(12)</sup>. *WWOX* physically interacts via its first WW domain with the p53 homolog, p73 and induces cell apoptosis <sup>(13)</sup>. Numerous studies have correlated loss of *WWOX* expression with cancer development, including some associating *WWOX* alteration with poor prognosis and outcome in various cancer types <sup>(11)</sup>, suggesting a growth advantage for tumors with loss of *WWOX*. *Ki-67* represents a nuclear protein forming part of DNA replicase complex that provides a simple, rapid

(1) Assistant Professor, Department of Oral Diagnosis, College of Dentistry, University of Baghdad

and reliable means of evaluating the growth fraction of neoplastic cell populations<sup>(14)</sup>. Ki-67 has a short half-life; hence it can be used as a marker for actively proliferating cells. Since it is not expressed during the resting phase of a cell cycle, it functions as a specific indicator of cellular proliferation<sup>(15)</sup>.

## MATERIALS AND METHODS

Forty five formalin-fixed, paraffin-embedded tissue blocks (15 cases of CGCG, 15 cases of PGCG and 15 cases of GCT) were obtained randomly from the archives of the department of Oral & Maxillofacial Pathology/ College of Dentistry/ University of Baghdad and Al-Shaheed Ghazi Hospital/ Medical City / Baghdad during the period (1976-2012). The clinical data were obtained from surgical reports available with the tissue specimens. The diagnosis of each case was confirmed by examining the hematoxylin and eosin (H&E) sections by two experienced pathologists.

Four  $\mu\text{m}$  thick sections were cut for immunohistochemical staining with anti WWOX and anti Ki67 monoclonal antibodies (Mabs) (AbcamUK). Abcam expose mouse and rabbit HRP/DAB immunohistochemical detection kit (Catalog No. ab80436, Cambridge, UK) was used for both primary antibodies (WWOX, Ki67). Negative and positive controls were included in each IHC run. Human colon carcinoma tissue blocks were used for WWOX and tonsil tissue blocks for Ki67 (according to antibodies manufacturer).

For immunohistochemistry, the sections were mounted on positively charged slides. Slides were baked in hot air oven at 65°C overnight. Sections were sequentially dewaxed through a series of xylene, graded alcohol and water immersion steps. Antigen (Ag) retrieving was done for both WWOX and Ki67 Abs as recommended by the manufacturer. Then endogenous peroxidase activity was blocked followed by blocking the non-specific staining. Primary Abs (100 ml) was applied for each section. A dilution of (1:75) for WWOX, and (1:100) for Ki67 were used. After an overnight incubation and washing with phosphate buffered solution (PBS), secondary Abs were applied, incubated and rinsed with a stream of PBS. Primary Abs were visualized with 3, 3-diaminobenzidine (DAB) chromogen, then counterstained with Mayer's hematoxyline, dehydrated and mounted.

Immunohistochemical expression recorded in percentage of stained stromal cells and

multinucleated giant cells in the studied lesions was classified and scored as follows: - For WWOX, cytoplasmic or cytoplasmic/nuclearstaining pattern was considered positive for WWOX immunostaining. Immunoreactivity was classified as follows: (1) negative <10%, (2) weak positive 10-50% and (3) strong positive  $\geq 50\%$ <sup>(10)</sup>. For Ki67 any brown nuclear staining, regardless of its intensity was considered to be positive<sup>(16,17)</sup>. Immunoreactivity was classified as follows: (-)  $\leq 5\%$  negative, (+) 6-25 % low proliferation, (++) 26-50% moderate proliferation and (+++) 51-100% high proliferation of the considered positive cells<sup>(18)</sup>.

All the data of the studied samples were subjected to computerized statistical analysis using SPSS version 19 computer program. Kruskal-Wallis H test was used to compare between the percentages of markers expression among lesion types.

Mann-Whitney U test used after Kruskal-Wallis H test if it is significant to test any significant difference between each two lesions. Spearman's Rank correlation test was used to test the relation between the markers in each lesion type. The positive sign of r value means there is direct relation and vice versa.

## RESULTS

The results of present study revealed female predilection in both central and peripheral giant cell granuloma comprising (60%) of (9) cases in each of them. Similarly, in GCT, there was female predilection comprising (53.3 %) of 8 cases as shown in table (1 and 2).

The age range of the patients was 8-52 years with a mean of (25.93 $\pm$ 13.5) years for C.G.C.G. and age range of 3-75 years with a mean of (41.6 $\pm$ 23.5) years for peripheral giant cell granuloma. Whereas for patients with giant cell tumor the age range was 2-73 years with a mean of (32.5 $\pm$ 17.5) years. As demonstrated in table (1 and 2).

Considering site distribution, giant cell granuloma lesions were distributed between upper and lower jaw as follow: C.G.C.G. presented in maxilla in 20% (3 cases) and in the mandible 80% (12 cases), P.G.C.G occurred in maxilla in 46.7% (7 cases) and in the mandible 53.3% (8 cases). Whereas, Giant cell tumor cases were distributed among various body regions beginning with head area and Radius bone 33.33% (5 cases) for each of them followed by Femur bone 26.66% (4 cases) and Tibia bone 6.7% (1 case), as shown in table (1 and 2).

**Table 1: The demographic and clinical description of 15 patients with central giant cell granuloma and 15 patients with peripheral giant cell granuloma**

Lesion type	Site		Sex		Age			
	Mand.	Maxilla	Male	Female	Mean	S.D.	Min.	Max.
CGCG	12 (80%)	3 (20%)	6 (40%)	9 (60%)	25.93	13.6	8	52
PGCG	8 (53.3%)	7 (46.7%)	6 (40%)	9 (60%)	41.6	23.5	3	75

**Table 2: The demographic and clinical description of 15 patients with Giant cell Tumor**

Sex		Age				Site			
Male	Female	Mean	SD	Min.	Max.	Tibia	Femur	Radius	Head
7 (46.7%)	8 (53.3%)	32.5	17.5	2	73	1 (6.7%)	4 (26.7%)	5 (33.3%)	5 (33.3%)

**Assessment of the immunohistochemical expression of WWOX and KI67 Mabs**

Positive WWOX Immunostaining was detected as brown cytoplasmic or cytoplasmic with nuclear expression, mostly in multinucleated giant cells and some of mononuclear cells of CGCG, PGCG and GCT (Fig. 1-3).

Analysis of immunohistochemical expression of WWOX Ab. in CGCG, PGCG and GCT revealed positive expression in 12 cases (80%) of

CGCL, 14 cases (93.3%) of PGCL and 12 (80%) of GCT studied cases. Results revealed predominance of score 3 i.e strong positive expression in both CGCG and PGCG with 10 cases (66.7%) of CGCG and 12 cases (80%) of PGCG respectively, whereas in GCT, positive cases of WWOX expression revealed equal distribution between strong and weak expression scores with 6 cases (40%) for each one as shown in the table(3).

**Table 3: Immunohistochemical expression of WWOX in all giant cell lesions**

Lesions	I	II	III	Total
C.G.C.G.	3 (20%)	2 (13.3%)	10 (66.7%)	15(100%)
P.G.C.G.	1 (6.7%)	2 (13.3%)	12 (80%)	15(100%)
G.C.T.	3 (20%)	6 (40%)	6 (40%)	15(100%)

Positive KI67 Immunostaining was detected as brown nuclear expression of stromal cells of CGCG, PGCG and GCT (Fig. 4-6).

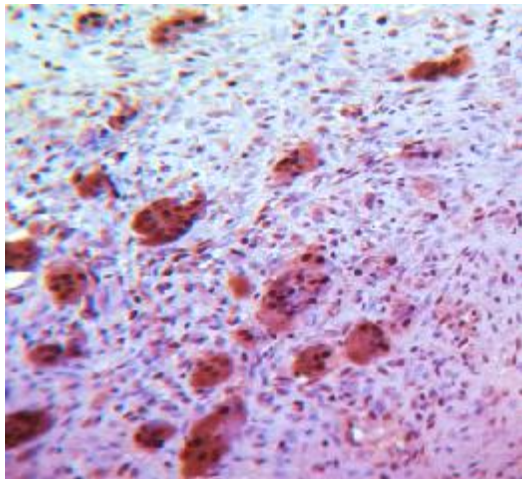
Analysis of immunohistochemical expression of KI67 Ab. in CGCG, PGCG and GCT revealed positive expression in 12 cases (80%) of CGCL, 13 cases (86.7%) of PGCL and 10 (66.7%) of GCT studied cases. Positive cases revealed

predominance of high proliferative expression score in both CGCG and PGCG with 9 cases (60%) of CGCG and 10 cases (66.7%) of PGCG respectively, whereas in GCT, results revealed low proliferation score in 5 cases (33.3%), 3 cases (20%) with moderate proliferation score and the remaining 2 cases (13.3%) with strong expression scores as shown in the table(4).

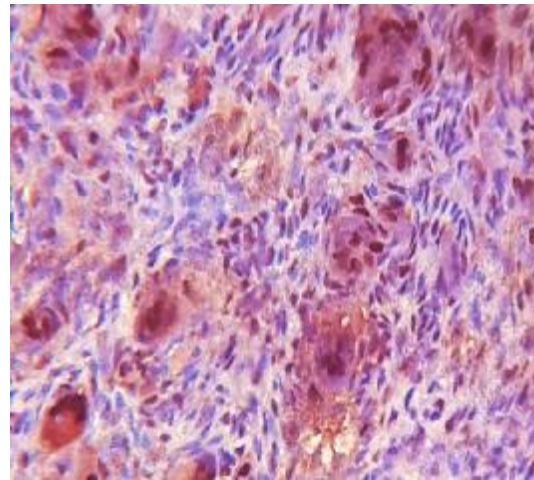
**Table 4: Immunohistochemical expression of KI67 in all giant cell lesions**

Lesions	-ve	I	II	III
C.G.C.G.	3 (20%)	1 (6.7%)	2 (13.3%)	9 (60%)
P.G.C.G.	2 (13.3%)	1 (6.7%)	2 (13.3%)	10 (66.7%)
G.C.T.	5 (33.3%)	5 (33.3%)	3 (20%)	2(13.3%)

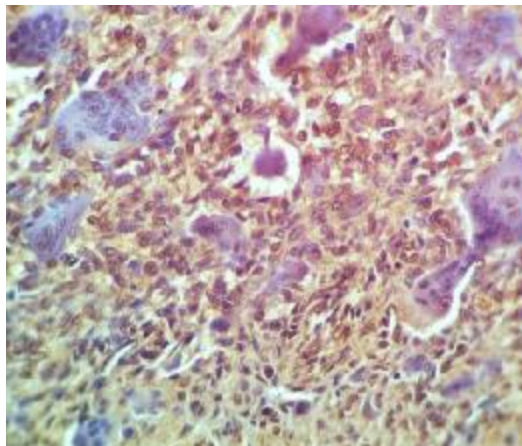




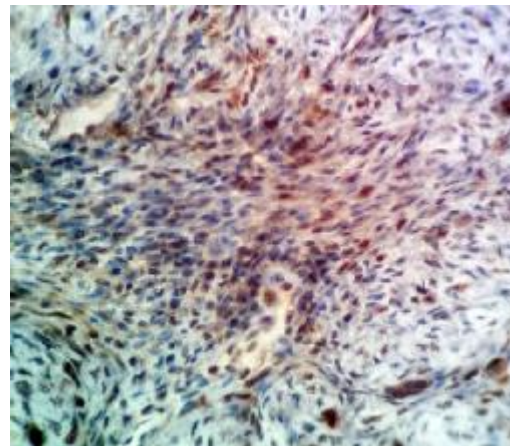
**Figure 1: Positive WWOX immunostaining in CGCG(X40)**



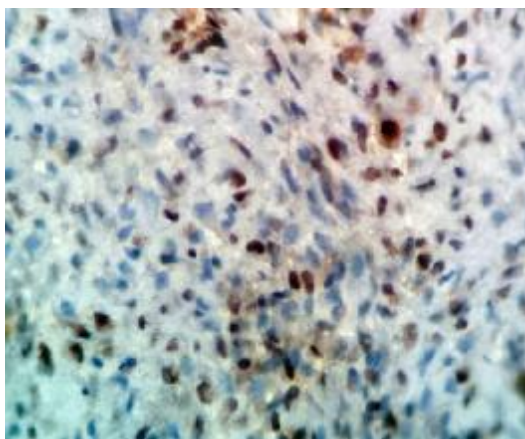
**Figure2: Positive WWOX immunostainig in PGCG(X40)**



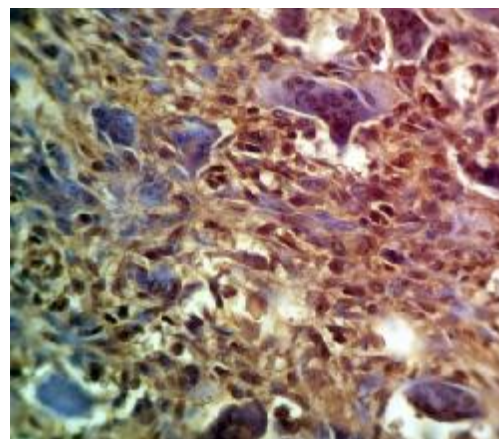
**Figure 3: Positive WWOX immunostaining in GCT(X40)**



**Figure 4: Positive Ki67 immunostaining in CGCG (X40)**



**Figure 5: Positive Ki67 immunostaining in PGCG (X40)**



**Figure 6: Positive Ki67 immunostaining in GCT(X40)**

**Comparison the percentages of Ki67 and Wwox expression among different studied giant lesion types**

Statistical analysis using Kruskal Wallis and Mann Whitney tests revealed that, there is a highly significant difference in the expression of

Ki67 between the high PGCG mean percentage (65%) & low GCT mean percentage (25.67%) with p value =0.006 .On the other hand ,non significant difference was found in WWOX expression amongthe studied giant lesions (p=0.060) (Table 5 and 6)

**Table 5: Comparison the percentages of Ki67 and Wwox markers among the lesions**

Markers	Lesions	Descriptive statistics							Comparison		
		N	Median	Mean	S.D.	Min.	Max.	Mean Rank	Kruskall-Wallis H test	d.f.	p-value
Ki67	CGC	15	60	51.67	33.31	0	90	24.27	10.39	2	0.006 (HS)
	PGC	15	80	65	33.49	0	95	29.97			
	GCT	15	20	25.67	25.06	0	75	14.77			
Wwox	CGC	15	80	60	33.91	0	90	24.37	5.64	2	0.060 (NS)
	PGC	15	80	69.33	24.92	0	90	27.83			
	GCT	15	50	45	31.11	0	85	16.80			

**Table 6: Mann-Whitney U test after Kruskal-Wallis H test for Ki67**

Lesions	Mean Rank	Mann-Whitney U test	Z-test	p-value
CGC	13.27	79	-1.39	0.162 (NS)
PGC	17.73			
CGC	19	60	-2.19	0.028 (S)
GCT	12			
PGC	20.23	41	-2.97	0.003 (HS)
GCT	10.77			

**Correlation between the percentages of Ki67 and WWOx in the studied cell lesions:**

Results of present study and according to spearman's test correlation revealed non-

significant correlation between the expression of WWOX and KI67 in CGCG, PGCG and GCT studied cases (Table 7-9).

**Table7: Relation between the percentages of Ki67 and WWOX in CGCG**

Markers	R	WWOX
Ki67	0.488	
	p-value	0.065 (NS)

**Table 8: Relation between the percentages of Ki67 and WWOX in PGCG**

Markers	R	WWOX
Ki67	0.315	
	p-value	0.253 (NS)

**Table 9: Relation between the percentages of Ki67 and WWOX in GCT**

Markers	R	WWOX
Ki67	0.339	
	p-value	0.216 (NS)

**DISCUSSION**

Giant cell lesions of the jaw and GCT of long bones have a distinct clinical behavior. Both lesions are characterized histologically by multinucleated giant cells in a background of ovoid to spindle-shaped mesenchymal cells. There is a basic question whether both lesions are separate entities or variants of the same disease,<sup>(18)</sup> and if biological behavior differences are

supported by a distinct pattern of certain markers proteins expression or not. Therefore this study was conducted in an attempt to assess the expression of WWOX tumor suppressor gene and proliferative marker Ki67 in giant cell lesions of the jaw bones in comparison to the giant cell tumor of long bones and to correlate their expression with each other in each studied lesion



to explain its possible role in the biological behavior of giant cell lesions and tumor.

The WWOX gene is a recently cloned tumor suppressor gene that spans the FRA16D fragile region. WWOX protein contains two WW domains that are generally known to mediate protein-protein interaction<sup>(13)</sup>. The subcellular localization of WWOX has been a controversial issue among the different research groups. Numerous immunohistochemical studies have shown that WWOX is a cytoplasmic protein both in normal and neoplastic tissues<sup>(20-25)</sup>. Other laboratories have reported that WWOX localizes in mitochondria and nuclei of some cells<sup>(26)</sup>. In the present study, both cytoplasmic and cytoplasmic/nuclear staining pattern was considered positive in both mononuclear and multinucleated giant cells.

Results revealed strong positive WWOX expression in majority of PGCG and CGCG studied cases, mostly in the giant cells; this finding is supported by results of previous study<sup>(27)</sup>. These findings support what previously reported that WWOX has an important role in apoptosis since it is mostly expressed in giant cells which have been shown to be the main source of this apoptotic event<sup>(26)</sup>. Concerning expression in GCT, and up to my knowledge this is the first study that attempt to compare WWOX expression in giant cell lesions of the jaw bones and giant cell tumor of long bones. The present finding showed that the majority of GCT cases showed positive expression with non-significant difference obtained in WWOX expression among CGCG, PGCG and GCT studied cases. This finding is in accordance with previous study conducted using other tumor suppressor gene<sup>(28)</sup> which supports the theory that these lesions are a spectrum of disease rather than different entities. On other hand the present findings indicate that WWOX could not be used to explain the differences between the giant cell lesions of the jaws and GCT of the long bones.

The Ki-67 antigen is a human nuclear protein used as a marker for cellular proliferation<sup>(15)</sup>. Ki-67 antigen is expressed during the G1, S, G2 and M phases of the cell cycle within the nucleus but is not expressed during the G0 (resting) phase, and thus it is a widely accepted proliferation marker and is useful in predicting the development of human neoplasm<sup>(14)</sup>.

Although the biological behavior is not only reflected by the proliferation index by tumor cells, but still it represents a clue on tumor activity. The results of previous study showed greater Ki-67 immunoreactivity in PGCL compared to CGCL<sup>(29)</sup>. Similar results obtained in the present

study. Additionally, CGCG and PGCG had a higher proliferative activity than GCT with a highly significant difference in Ki67 expression was found between CGG, PGCG and giant cell tumor. Similar results obtained in previous studies<sup>(29-31)</sup>. However, Souza, et al. stated that the differences observed in proliferative activity do not explain the different biological behavior of CGCG and GCT. They emphasized that since CGCG and GCT occur in different sites, it is difficult to compare accurately their biological evolution<sup>(28)</sup>. They suggested that CGCG and GCT could represent variants of the same disease.

## REFERENCES

1. Matos FR, Nonaka CFW, Miguel MC da C, Galvão HC, de Souza LB, Freitas R de A. Immunoexpression of MMP-9, VEGF, and vWF in central and peripheral giant cell lesions of the jaws J Oral Pathol Med 2011 40: 338-344
2. Corso E De, Politi M, Paludetti G. Advanced giant cell reparative granuloma of the mandible: radiological features and surgical treatment. Acta Otorhinolaryngol 2006; 3:168-172.
3. Neville BW, Damm DD, Allen CM, Bouquot JE. Bone Pathology in: Oral and Maxillofacial Pathology. 3<sup>rd</sup> ed. Philadelphia: WB Sanders; 2009, pp.507-629.
4. de Matos FR, de Moraes M, Nonaka CFW, Lélia de Souza LB, Freitas RDA. Immunoexpression of TNF- $\alpha$  and TGF- $\beta$  in central and peripheral giant cell lesions of the jaws J Oral Pathol Med 2012; 41: 194-9
5. Kumta SM, Huang L, Cheng YY, Chow LT, Lee KM, Zheng MH. Expression of VEGF and MMP-9 in giant cell tumor of bone and other osteolytic lesions. Life Sci 2003; 73:1427-36.
6. Zheng MH, Robbins P, Xu J, et al. The histogenesis of giant cell tumour of bone: a model of interaction between neoplastic cells and osteoclasts. Histol Histopathol 2001; 16: 297-307.
7. Pogrel, M.A. Calcitonin therapy for central giant cell granuloma. J Oral Maxillofac Surg 2003; 61: 649
8. Werner M. Giant cell tumor of bone: morphological, biological and histogenetical aspects. Int orthop 2006; 30-489.
9. Lanza A, Laino L, Cirillo N Clinical Practice: Giant Cell Tumour of the Jaw Mimicking Bone Malignancy on Three-Dimensional Computed Tomography (3D CT) Reconstruction. Open Dent J 2008; 2: 174-178.
10. Pimenta FJ, Gomes DA, Perdigão PF, Barbosa AA, Romano-Silva MA, Gomez MV, Aldaz CM, De Marco L, Gomez RS. Characterization of the tumor suppressor gene WWOX in primary human oral squamous cell carcinomas. Int J Cancer 2006; 118(5):1154-8.
11. Aqeilan RI, Croce CM WWOX in biological control and tumorigenesis. J Cell Physiol 2007; 212(2):307-10
12. Sudol M, Recinos CC, Abraczinskas J, Humbert J, Farooq A. WW or WoW: The WW domains in a union of bliss. IUBMB Life 2005; 57:773-78.
13. Aqeilan RI, Pekarsky Y, Herrero JJ, et al. Functional association between Wwox tumour suppressor protein and p73, a p53 homolog. Proc Natl Acad Sci USA 2004; 101: 4401-6.

14. Scholzen T, Gerdes J. The Ki 67 protein: from the known and the unknown (review) *J Cellphysiol* 2000; 182: 311–22.
15. Ismail FW, Shamsudin AM, Wan Z, Daud SM, Samarendra MS. Ki-67 immuno-histochemistry index in stage III giant cell tumor of the bone. *J Experimental & Clinical Cancer Res* 2010; 29:25
16. Pan C, Ho D, Chen W, et al. Ki67 labelling index correlate with stage and histology but not significantly with prognosis in thymoma. *Histopathol* 1998; 33: 453-458.
17. Lindboe A, Liljegren A. Tumor markers in malignancies. *BMJ* 2000; 320(7232): 424-7.
18. Alves FA, Pires FR, de Almmeida OP, Lopes MA, Kowalski LP. PCNA, Ki67 and p53 expression in submandibular salivary gland tumors. *J Oral Maxillofac Surg* 2004; 33:593-7.
19. de Souza PE, Paim JF, Carvalhais JN, Gomez RS. Immunohistochemical expression of p53, MDM2, Ki-67 and PCNA in central giant cell granuloma and giant cell tumor. *OralPathol Med* 1999; 28(2):54-8.
20. Aqeilan RI, Kuroki T, Pekarsky Y, Albagha O, Trapasso F, Baffa R, Huebner K, Edmonds P, Croce CM. . Loss of WWOX expression in gastric carcinoma. *Clin Cancer Res* 2004a; 10: 3053–8.
21. Guler G, Uner A, Guler N, Han SY, Iliopoulos D, Hauck WW, McCue P, Huebner K. . The fragile genes FHIT and WWOX are inactivated coordinately in invasive breast carcinoma. *Cancer* 2004; 100: 1605–14.
22. Nunez MI, Ludes-Meyers J, Abba MC, Kil H, Abbey NW, Page RE, Sahin A, Klein-Szanto AJ, Aldaz CM. . Frequent loss of WWOX expression in breast cancer: Correlation with estrogen receptor status. *Breast Cancer Res Treat* 2005a; 89: 99–105.
23. Nunez MI, Rosen DG, Ludes-Meyers JH, Abba MC, Kil H, Page R, Klein-Szanto AJ, Godwin AK, Liu J, Mills GB, Aldaz CM. . WWOX protein expression varies among ovarian carcinoma histotypes and correlates with less favorable outcome. *BMC Cancer* 2005b; 5:64.
24. Nunez MI, Ludes-Meyers J, Aldaz CM. WWOX protein expression in normal human tissues. *J Mol Histol* 2006; 37: 115–125.
25. Aqeilan RI, Trapasso F, Hussain S, Costinean S, Marshall D, Pekarsky Y, Hagan JP, Zanasi N, Kaou M, Stein GS, Lian JB, Croce CM. Targeted deletion of Wwox reveals a tumor suppressor function. *PNAS* 2007; 104: 3949–54.
26. Chang NS, Hsu LJ, Lin YS, Lai FJ, Sheu HM. . WW domain-containing oxidoreductase: A candidate tumor suppressor. *Trends Mol Med* 2007; 13: 12–22.
27. Amaral FR, Diniz MG, Bernard's VF, Souza PE, Gomez RS, Gomes CC. WWOX expression in giant cell lesions of the jaws. *Oral Surg Oral Med Oral Pathol Oral Radiol* 2013; 116(2): 210-3.
28. Kader OA, Abdullah BH, Edward L. Histopathological and Immunohistochemical Study of Giant Cell Granuloma of the Jaw and Giant Cell Tumor of Long Bones (Comparative Stud). *The Iraqi Postgraduate Medical J* 2011; 10 (1):33-39.
29. Souza PE, Mesquita RA, Gomez RS Evaluation of p53, PCNA, Ki-67, MDM2 and AgNOR in oral peripheral and central giant cell lesions. *Oral Dis* 2000; 6(1):35-9.
30. de Souza PE, Paim JF, Carvalhais JN, Gomez RS. Immunohistochemical expression of p53, MDM2, Ki-67 and PCNA in central giant cell granuloma and giant cell tumor. *J Oral Pathol Med* 1999; 28:54-8.
31. Maria do Socorro Aragão; Marta RabelloPiva; Cassiano Francisco WeegeNonaka; Roseana de Almeida Freitas; Lélia Batista de Souza; Leão Pereira Pinto Central giant cell granuloma of the jaws and giant cell tumor of long bones - an immunohistochemical comparative study. *J Appl Oral Sci* 2007; 15:4.

### الخلاصة

**الخلفية:** إن أفة الخلايا العملاقة الطرفية وأفة الخلايا العملاقة المركزية للفكين لها سلوك سريري واضح. إن ورم الخلايا العملاقة هو من الأورام الحميدة المحددة العدوانية يصيب العظام الطويلة وتتميز كلا الإفات تشريحيًا من الخلايا العملاقة المتعددة النوى في خلفية من الخلايا البيضوية إلى مغزلية الشكل من خلايا اللحمة المتوسطة. إن جين (WWOX) يقع ضمن منطقة (16q23.1–16q23.2) وهي المنطقة التي تضم الموقع البشري الهش الأكثر شيوعًا. إن بروتين (Ki-67) هو بروتين نووي مقترن بعملية تكاثر الخلايا وضروري لها. إن هذا البروتين موجود أثناء كل الأطوار الفعالة من دورة الخلية ولكنه غائب عن الخلايا الساكنة. هدفت هذه الدراسة إلى تقييم ومقارنة الأظهار الكيميائي النسيجي المناعي للجين المثبط للأورام (WWOX) ومعلم التكاثر (ki67) في أفات الخلايا العملاقة للفكين والعظام الطويلة.

**المواد والطرق:** تم تضمين خمس وأربعين عينة نسيجية استرجاعية ممتورة بالبارافين من أفات الخلايا العملاقة للفكين والعظام الطويلة في هذه الدراسة. تم صبغ المقاطع النسيجية لهذه العينات باستخدام الصبغات النسيجية المناعية بمضادات ال (WWOX) وال (ki67).

**النتائج:** وجد الأظهار الإيجابي لل (WWOX) في 12 حالة (80%)، 14 حالة (93.3%) و 12 حالة (80%) من الحالات المدروسة من ال (CGCG)، (PGCG) و (GCT) على التوالي. ووجد الأظهار الإيجابي لل (Ki67) في 12 حالة (80%)، 13 حالة (86.7%) و 10 حالات من الحالات المدروسة من (CGCG)، (PGCG) و (GCT) على التوالي مع تسجيل مؤشر عالي للتكاثر في (PGCG). وجد فرق كبير للغاية بين الحالات المدروسة في أظهار ال (Ki67) مع عدم وجود فرق بينها في درجة أظهار ال (WWOX). تم العثور على علاقة غير كبيرة بين ال (WWOX) و (Ki67) في مختلف أفات الخلايا العملاقة المدروسة.

**الاستنتاجات:** تشابه الظهور الكيميائي النسيجي المناعي لل (WWOX) و (Ki67) في أفات الخلايا العملاقة في الفكين والعظام الطويلة مع وجود علاقة غير معنوية بينهما في مختلف الحالات المدروسة الأمر الذي يدل على أن هذه الإفات قد تكون نفس المرض ولكن بحالات سريرية مختلفة.